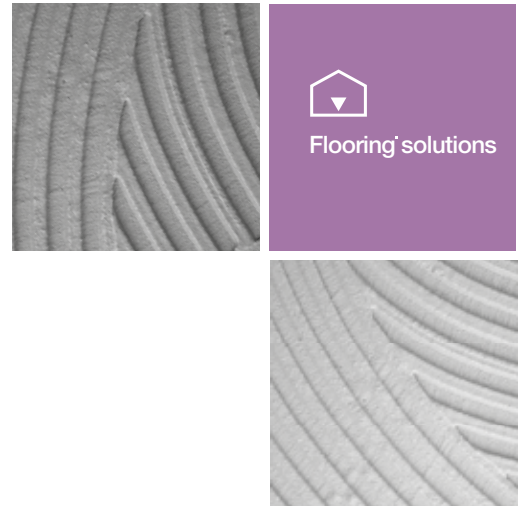




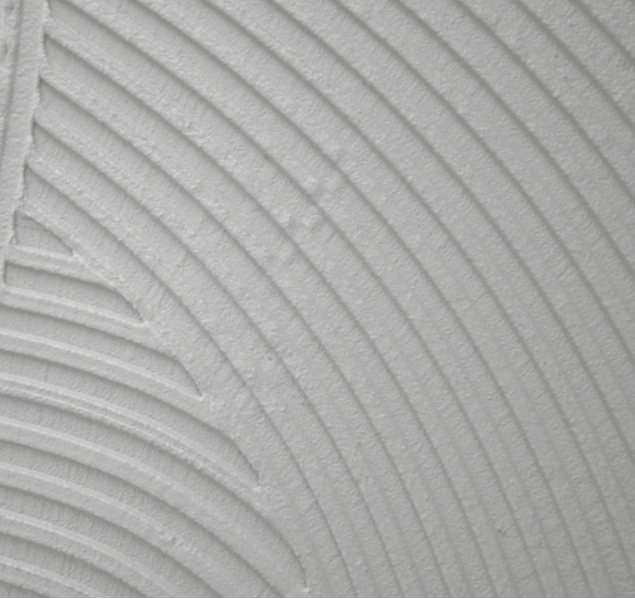
licata.floor
flooring systems and products

flooring systems and products **6.0**



licata

Guardian of the past
Shapers of the future



Installation of ceramic tiles over underfloor heating and cooling systems

Floor_Line SuperS1

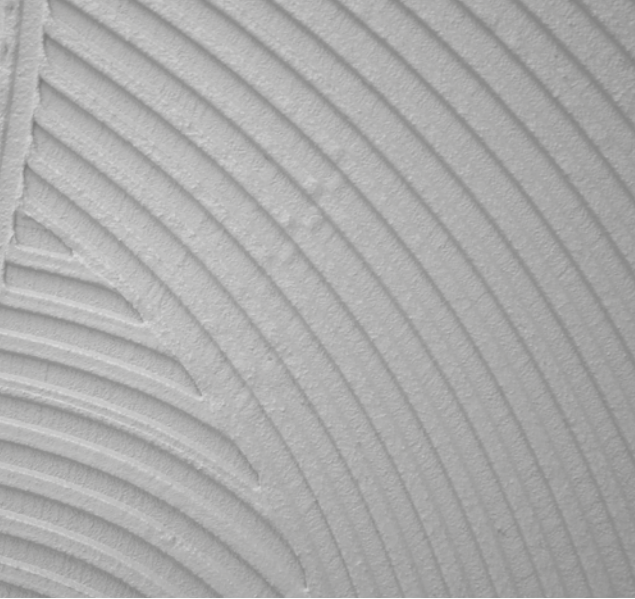
Characteristics

SuperS1: It is a single-component cementitious adhesive classified in accordance with **UNI EN 12004** and **UNI EN 12002**, cementitious adhesive (C), improved anchorage (2), zero vertical slip (T), extended setting time (E) and highly deformable (S1). Its special characteristics allow for application in thicknesses ranging from 2 to 15 mm, using a notched or smooth trowel, and its high deformability and excellent wetting power make it suitable for large-format tiles and surfaces that are not perfectly flat, both indoors and outdoors. Its exceptional versatility makes it ideal for both residential and commercial applications.



- 01_**
Load-bearing element
- 02_**
Lightened background
- 03_**
Underfloor heating system
- 04_**
FloorK300
A fast-setting, fibre-reinforced self-levelling screed, suitable for thicknesses of 3 to 40 mm, for indoor use.
- 05_**
SuperS1
Single-component cementitious adhesive, available in white and grey, high-performance, zero vertical slip, highly flexible, extended open time, high thickness (15 mm), for indoor and outdoor use.
- 05_**
Ceramic cladding
- 06_**
FugaTop
High-performance cementitious grout for filling joints of 0 to 8 mm in ceramic tiles, porcelain stoneware, mosaics and natural stone. Ideal for smooth, compact joints. For indoor and outdoor use. Product with very low emissions of volatile organic compounds. Complies with the requirements of class **CG2WA** according to **EN 13888** and **ISO 13007-3**.

- 01** Load-bearing
- 02** Lightened background
- 03** Underfloor heating system
- 04** FloorK300
- 05** SuperS1
- 06** Ceramic cladding
- 07** FugaTop



Restoration and levelling of old screeds

Floor_Line SuperS1

Characteristics

SuperS1: SuperS1: It is a single-component cementitious adhesive classified in accordance with **UNI EN 12004** and **UNI EN 12002**, cementitious adhesive (C), improved anchorage (2), zero vertical slip (T), extended setting time (E) and highly deformable (S1). Its special characteristics allow for application in thicknesses ranging from 2 to 15 mm, using a notched or smooth trowel, and its high deformability and excellent wetting power make it suitable for large-format tiles and surfaces that are not perfectly flat, both indoors and outdoors. Its exceptional versatility makes it ideal for both residential and commercial applications.



01_
Old screed

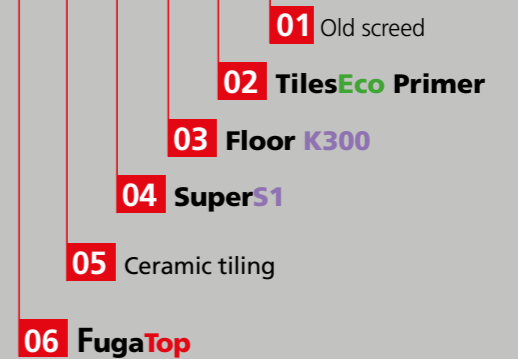
02_
TilesEco Primer
A ready-to-use, single-component universal primer with very low volatile organic compound (VOC) emissions, ideal as an adhesion promoter for overlay applications on existing flooring.

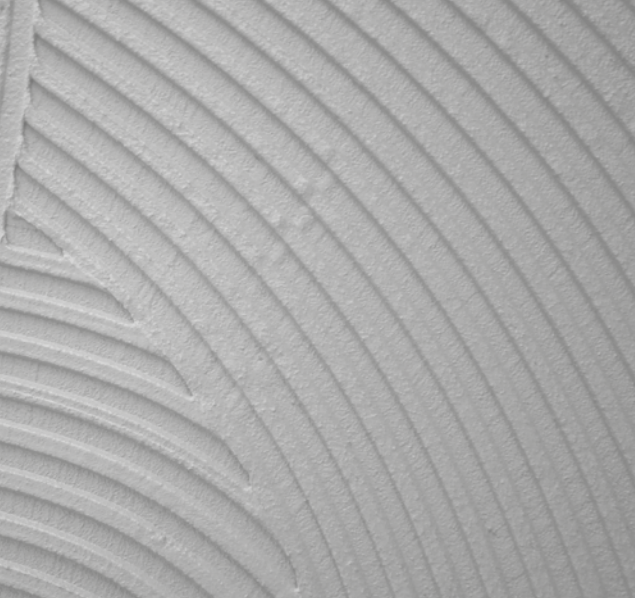
03_
FloorK300
A fast-setting, fibre-reinforced self-levelling screed, suitable for thicknesses of 3 to 40 mm, for indoor use.

04_
SuperS1
Single-component cementitious adhesive, available in white and grey, high-performance, zero vertical slip, highly flexible, extended open time, high thickness (15 mm), for indoor and outdoor use.

05_
Ceramic tiling

06_
FugaTop
High-performance cementitious grout for filling joints of 0 to 8 mm in ceramic tiles, porcelain stoneware, mosaics and natural stone. Ideal for smooth, compact joints. For indoor and outdoor use. Product with very low emissions of volatile organic compounds. Complies with the requirements of class **CG2WA** according to **EN 13888** and **ISO 13007-3**.





Renovation and refurbishment of existing floors in commercial premises

Floor_Line SuperS1

Characteristics

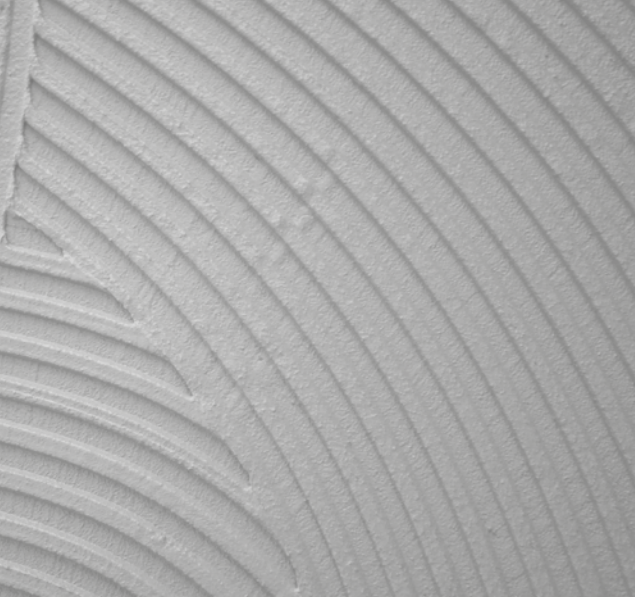
SuperS1: SuperS1: It is a single-component cementitious adhesive classified in accordance with **UNI EN 12004** and **UNI EN 12002**, cementitious adhesive (C), improved anchorage (2), zero vertical slip (T), extended setting time (E) and highly deformable (S1). Its special characteristics allow for application in thicknesses ranging from 2 to 15 mm, using a notched or smooth trowel, and its high deformability and excellent wetting power make it suitable for large-format tiles and surfaces that are not perfectly flat, both indoors and outdoors. Its exceptional versatility makes it ideal for both residential and commercial applications.



- 01_**
Existing flooring
- 02_**
TilesEco Primer
A ready-to-use, single-component universal primer with very low volatile organic compound (VOC) emissions, ideal as an adhesion promoter for overlay applications on existing flooring.
- 03_**
FloorK300
A fast-setting, fibre-reinforced self-levelling screed, suitable for thicknesses of 3 to 40 mm, for indoor use.
- 04_**
SuperS1
Single-component cementitious adhesive, available in white and grey, high-performance, zero vertical slip, highly flexible, extended open time, high thickness (15 mm), for indoor and outdoor use.

- 05_**
Ceramic tiling
- 06_**
FugaTop
High-performance cementitious grout for filling joints of 0 to 8 mm in ceramic tiles, porcelain stoneware, mosaics and natural stone. Ideal for smooth, compact joints. For indoor and outdoor use. Product with very low emissions of volatile organic compounds. Complies with the requirements of class **CG2WA** according to **EN 13888** and **ISO 13007-3**.

- 01** Existing flooring
- 02** TilesEco Primer
- 03** Floor K300
- 04** SuperS1
- 05** Ceramic tiling
- 06** FugaTop



Waterproofing and tiling of new terraces

Floor_Line SuperS1

Characteristics

SuperS1: SuperS1: It is a single-component cementitious adhesive classified in accordance with **UNI EN 12004** and **UNI EN 12002**, cementitious adhesive (C), improved anchorage (2), zero vertical slip (T), extended setting time (E) and highly deformable (S1). Its special characteristics allow for application in thicknesses ranging from 2 to 15 mm, using a notched or smooth trowel, and its high deformability and excellent wetting power make it suitable for large-format tiles and surfaces that are not perfectly flat, both indoors and outdoors. Its exceptional versatility makes it ideal for both residential and commercial applications.



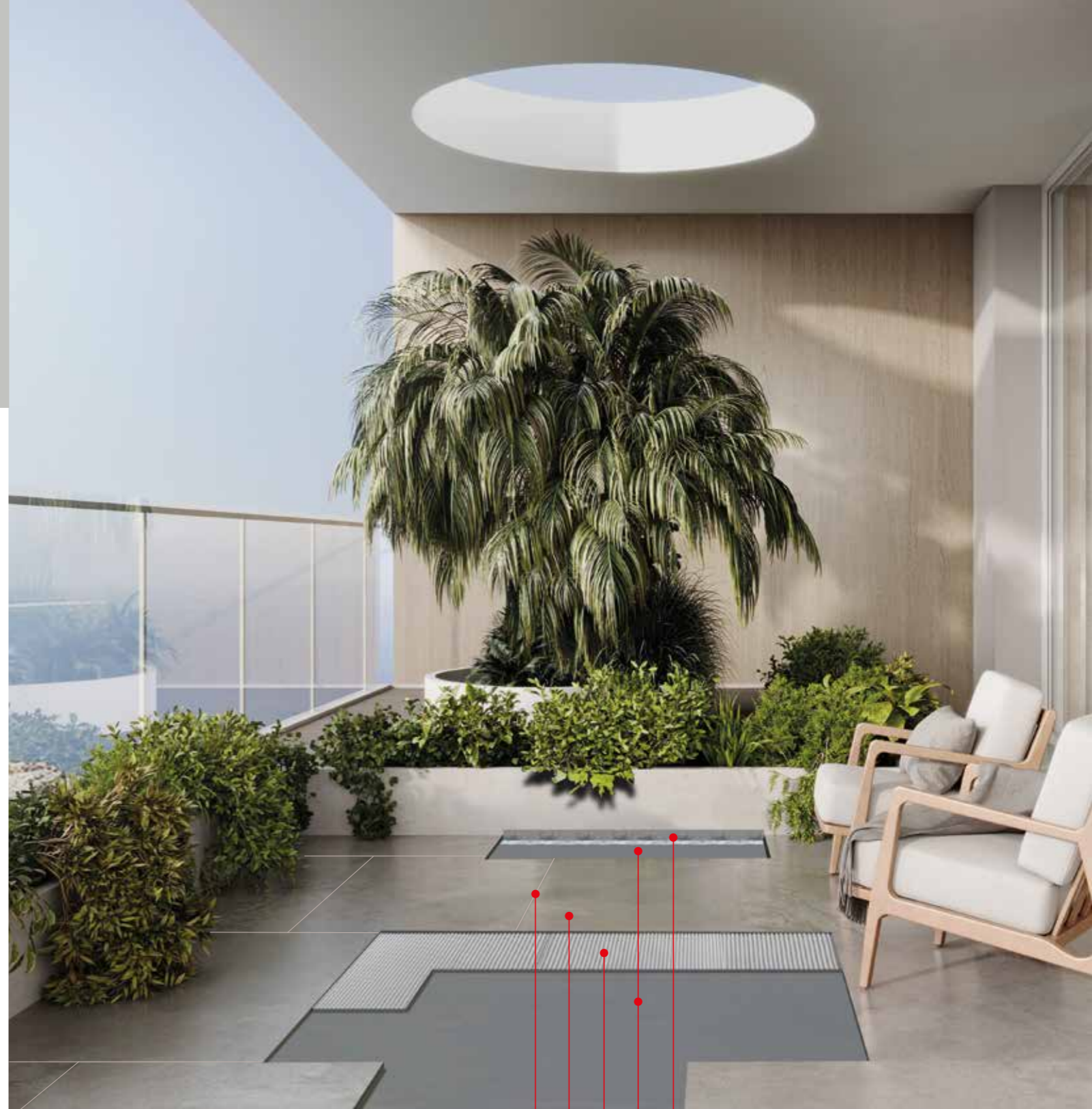
01_ LicaBand RL12
Alkali-resistant elastic tape, coated with polypropylene non-woven fabric, specifically designed for waterproofing and sealing perimeter joints, connections and areas subject to slight movement.

02_ HydroStar two-coat:
A single-component, fibre-reinforced, flexible cementitious coating specifically designed for the waterproofing and protection of concrete; resistant to UV rays and alkaline environments; certified in accordance with **UNI EN 1504-2** and **UNI EN 14891**.

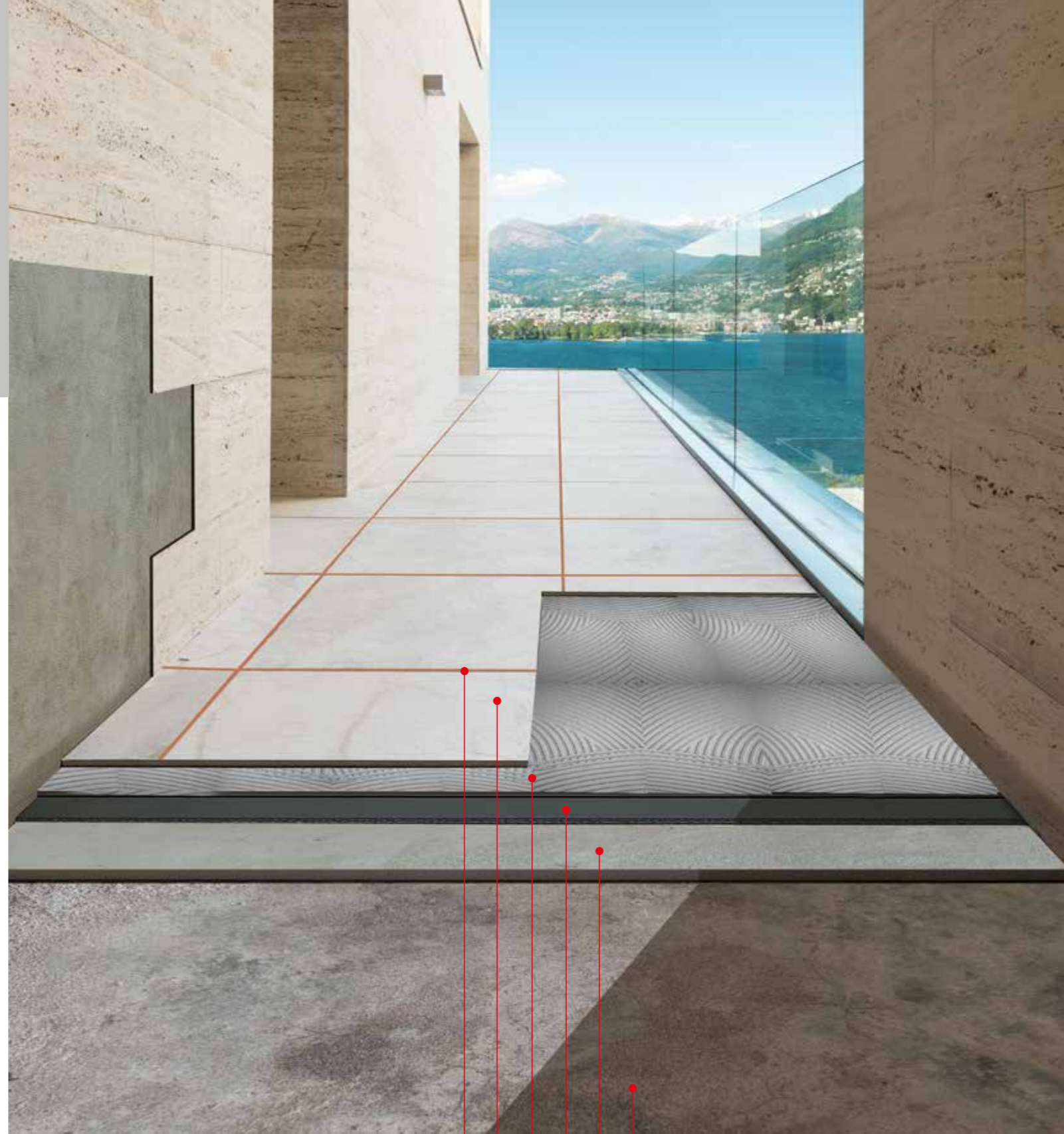
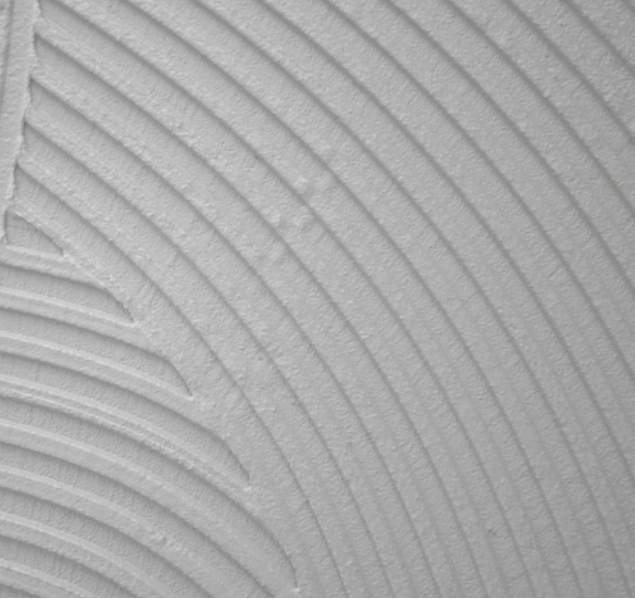
03_ SuperS1
Single-component cementitious adhesive, available in white and grey, high-performance, zero vertical slip, highly flexible, extended open time, high thickness (15 mm), for indoor and outdoor use.

04_ Ceramic tiling

05_ FugaTop
High-performance cementitious grout for filling joints of 0 to 8 mm in ceramic tiles, porcelain stoneware, mosaics and natural stone. Ideal for smooth, compact joints. For indoor and outdoor use. Product with very low emissions of volatile organic compounds. Complies with the requirements of class **CG2WA** according to **EN 13888** and **ISO 13007-3**.



- 01** LicaBand RL12
- 02** HydroStar
- 03** SuperS1
- 04** Ceramic tiling
- 05** FugaTop



Waterproofing and levelling of existing floors on old Balcony

Floor_Line FlexS1

Characteristics

FlexS1: a high-performance, polymer-modified, deformable adhesive based on high-strength hydraulic binders, selected aggregates and state-of-the-art additives, suitable for both internal and external use. **FlexS1** complies with standards **UNI EN 12004** and **UNI EN 12002**, a cementitious adhesive (C) with improved characteristics (2), limited vertical slip (T), extended open time (E), and deformable (S1). **FlexS1** is specifically designed for high-strength bonding with good ability to absorb deformations in the substrate and for all types of ceramic tiles (including large-format tiles) in both indoor and outdoor applications, on floors and walls, in residential and commercial environments.



01_
Load-bearing element

02_
Repair 200SR
A thixotropic, polymer-modified, fibre-reinforced cementitious mortar, certified to **UNI EN 1504-2** and classified as R2 according to **UNI EN 1504-3**, specifically designed for the repair and skimming of concrete for applications with thicknesses ranging from 3 to 25 mm.

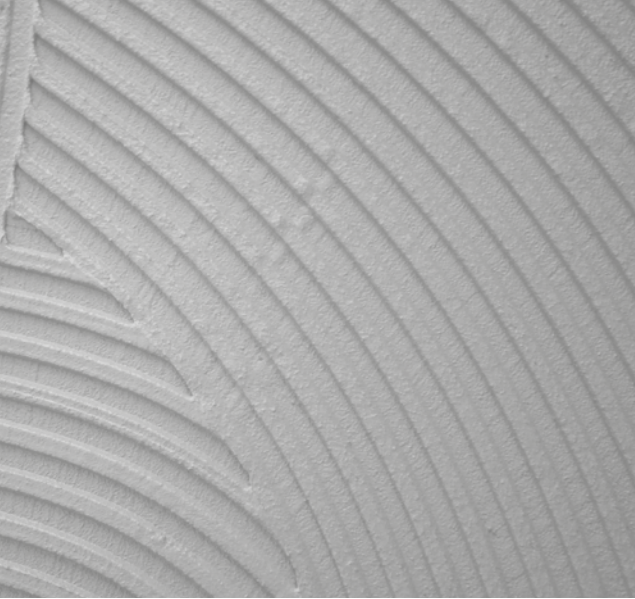
03_
HydroStar two-coat:
A single-component, fibre-reinforced, flexible cementitious coating specifically designed for the waterproofing and protection of concrete; resistant to UV rays and alkaline environments; certified in accordance with **UNI EN 1504-2** and **UNI EN 14891**.

04_
FlexS1
Single-component cementitious adhesive, available in white and grey, with good flexibility, no vertical creep and an extended open time, for indoor and outdoor use.

05_
Ceramic tiling

06_
FugaTop
High-performance cementitious grout for filling joints of 0 to 8 mm in ceramic tiles, porcelain stoneware, mosaics and natural stone. Ideal for smooth, compact joints. For indoor and outdoor use. Product with very low emissions of volatile organic compounds. Complies with the requirements of class **CG2WA** according to **EN 13888** and **ISO 13007-3**.

- 01** Load-bearing element
- 02** Repair 200SR
- 03** HydroStar
- 04** FlexS1
- 05** Ceramic tiling
- 06** FugaTop



Restoration of damp rooms

Floor_Line FlexS1

Characteristics

FlexS1: a high-performance, polymer-modified, deformable adhesive based on high-strength hydraulic binders, selected aggregates and state-of-the-art additives, suitable for both internal and external use. **FlexS1** complies with standards **UNI EN 12004** and **UNI EN 12002**, a cementitious adhesive (C) with improved characteristics (2), limited vertical slip (T), extended open time (E), and deformable (S1). **FlexS1** is specifically designed for high-strength bonding with good ability to absorb deformations in the substrate and for all types of ceramic tiles (including large-format tiles) in both indoor and outdoor applications, on floors and walls, in residential and commercial environments.



01_
Old floor

02_
TilesEco Primer
A ready-to-use, single-component universal primer with very low volatile organic compound (VOC) emissions, ideal as an adhesion promoter for overlay applications on existing flooring.

03_
Repair 200SR
A thixotropic, polymer-modified, fibre-reinforced cementitious mortar, certified to **UNI EN 1504-2** and classified as R2 according to **UNI EN 1504-3**, specifically designed for the repair and skimming of concrete for applications with thicknesses ranging from 3 to 25 mm.

04_
LicaBand RL12
Alkali-resistant elastic tape, coated with polypropylene non-woven fabric, specifically designed for waterproofing and sealing perimeter joints, connections and areas subject to slight movement.

05_
Licalastic Scud A ready-to-use, single-component, water-based, coloured, fibre-reinforced liquid elastomeric waterproofing product.

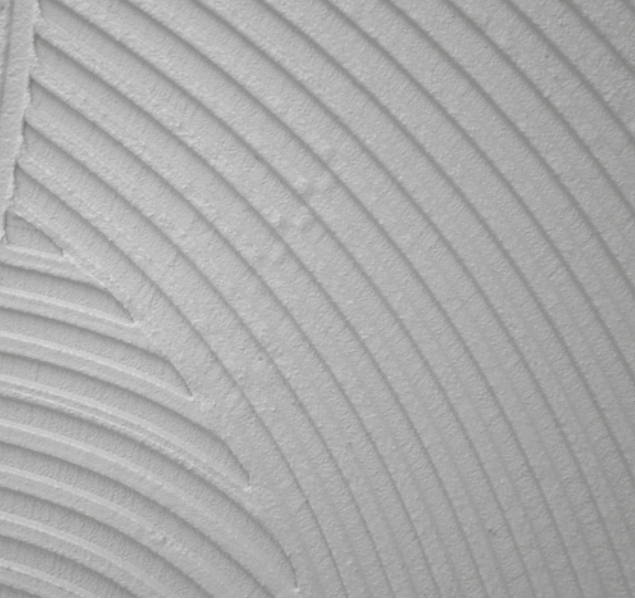
06_
FlexS1
Single-component cementitious adhesive, available in white and grey, with good flexibility, no vertical creep and an extended open time, for indoor and outdoor use.

07_
Ceramic tiling

08_
FugaTop
High-performance cementitious grout for filling joints of 0 to 8 mm in ceramic tiles, porcelain stoneware, mosaics and natural stone. Ideal for smooth, compact joints. For indoor and outdoor use. Product with very low emissions of volatile organic compounds. Complies with the requirements of class **CG2WA** according to **EN 13888** and **ISO 13007-3**.

01 Old floor
02 TilesEco Primer
03 Repair 200SR
04 LicaBand RL12
05 Licalastic Scud
06 FlexS1

07 Ceramic tiling
08 FugaTop



Installation of marble flooring

Floor_Line FlexS1

Characteristics

FlexS1: a high-performance, polymer-modified, deformable adhesive based on high-strength hydraulic binders, selected aggregates and state-of-the-art additives, suitable for both internal and external use. **FlexS1** complies with standards **UNI EN 12004** and **UNI EN 12002**, a cementitious adhesive (C) with improved characteristics (2), limited vertical slip (T), extended open time (E), and deformable (S1). **FlexS1** is specifically designed for high-strength bonding with good ability to absorb deformations in the substrate and for all types of ceramic tiles (including large-format tiles) in both indoor and outdoor applications, on floors and walls, in residential and commercial environments.



01_
Load-bearing element

02_
Repair 200SR
A thixotropic, polymer-modified, fibre-reinforced cementitious mortar, certified to **UNI EN 1504-2** and classified as R2 according to **UNI EN 1504-3**, specifically designed for the repair and skimming of concrete for applications with thicknesses ranging from 3 to 25 mm.

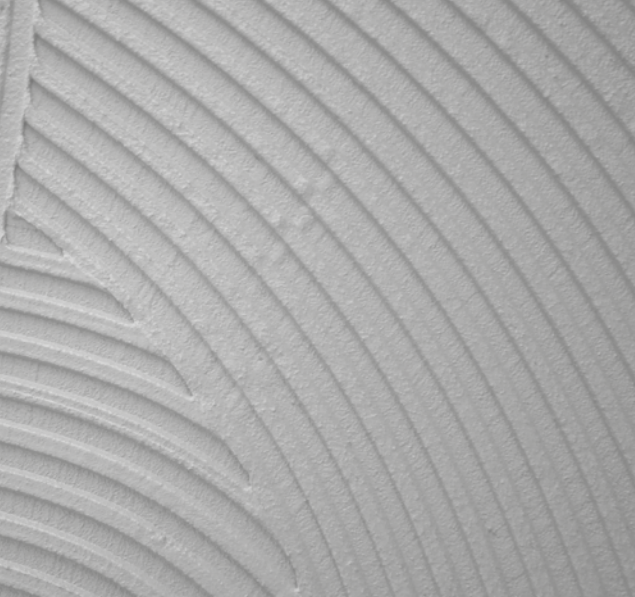
03_
FloorK300
A fast-setting, fibre-reinforced self-levelling screed, suitable for thicknesses of 3 to 40 mm, for indoor use.

04_
FlexS1
Single-component cementitious adhesive, available in white and grey, with good flexibility, no vertical creep and an extended open time, for indoor and outdoor use.

05_
Natural marble cladding

06_
FugaTop
High-performance cementitious grout for filling joints of 0 to 8 mm in ceramic tiles, porcelain stoneware, mosaics and natural stone. Ideal for smooth, compact joints. For indoor and outdoor use. Product with very low emissions of volatile organic compounds. Complies with the requirements of class **CG2WA** according to **EN 13888** and **ISO 13007-3**.

- 01** Load-bearing element
- 02** Repair 200SR
- 03** Floor K300
- 04** FlexS1
- 05** Natural marble cladding
- 06** FugaTop



Laying ceramic floor tiles

Floor_Line FlexPlus

Characteristics

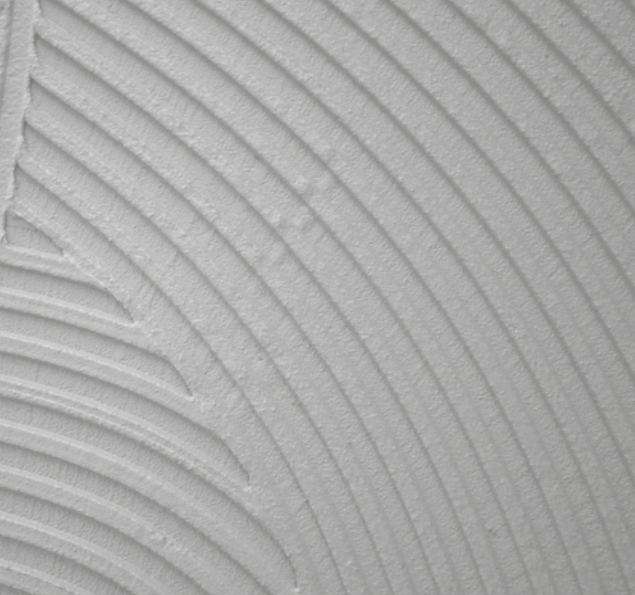
FlexPLUS: a single-component cementitious adhesive, classified in accordance with UNI EN 12004 as a cementitious adhesive (C), with improved anchorage (2), zero vertical slip (T) and extended setting time (E).



- 01_**
Load-bearing element
- 02_**
LicaPlan
A medium-fast-setting, controlled-shrinkage cement screed for indoor and outdoor use, suitable for underfloor heating and cooling systems.
- 03_**
FlexPlus
Single-component cementitious adhesive, available in white and grey, with improved performance, good flexibility, zero vertical slip and extended open time, for indoor and outdoor use.
- 04_**
Ceramic cladding

- 05_**
FugaTop
High-performance cementitious grout for filling joints of 0 to 8 mm in ceramic tiles, porcelain stoneware, mosaics and natural stone. Ideal for smooth, compact joints. For indoor and outdoor use. Product with very low emissions of volatile organic compounds.
Complies with the requirements of class **CG2WA** according to **EN 13888** and **ISO 13007-3**.

- 01** Load-bearing element
- 02** LicaPlan
- 03** FlexPlus
- 04** Ceramic cladding
- 05** FugaTop



Laying of medium-sized ceramic tiles

Floor_Line FlexHM

caratteristiche

FlexHM: a single-component cementitious adhesive, classified in accordance with **UNI EN 12004** as a cementitious adhesive (C), with improved anchorage (2), zero vertical slip (T) and extended setting time (E).



- 01_**
Load-bearing element
- 02_**
FloorK300
A fast-setting, fibre-reinforced self-levelling screed, suitable for application in thicknesses ranging from 3 to 40 mm, for indoor use.
- 03_**
FlexHM
A single-component, improved cementitious adhesive, available in white and grey, with zero vertical slip and an extended open time, for indoor and outdoor use.
- 04_**
Ceramic cladding

05_
FugaTop
High-performance cementitious grout for filling joints of 0 to 8 mm in ceramic tiles, porcelain stoneware, mosaics and natural stone. Ideal for smooth, compact joints. For indoor and outdoor use. Product with very low emissions of volatile organic compounds. Complies with the requirements of class **CG2WA** according to **EN 13888** and **ISO 13007-3**.

- 01** Elemento portante
- 02** FloorK300
- 03** FlexHM
- 04** Ceramic cladding
- 05** FugaTop



licata[®] S.p.A.

Head office

Via dei Mille, 32
00185 Roma
T +39 06 83773343

Factories and offices

via delle Gere, 13
24040 Pognano (BG)
T +39 035 0778638

Factories and offices

via Volta, 9/11
35037 Teolo (PD)
T +39 049 7385712

Factories and offices

c.da Andolina S.S.122
92024 Canicatti (AG)
T +39 0922 856088

Factories and offices

Via Ortana Vecchia, 557
05035 Narni (TR)
T +39 0744 034565

www.licataspa.it
info@licataspa.it